

# KOALA WATCH

## Healthy Koala

- Thick, grey coat, with white chest and rump
- Bright, alert, clear eyes
- Rounded, full belly
- Moves and climbs well
- Responds when startled

## Distressed, Sick or Injured Koalas

### Check the Eyes

- Red or swollen
- Pus or crust

### Check the Rump

- Stained (yellow to black)
- Wet

### Check the Body

- Wasted appearance
- Shoulder blades or spine visible through fur
- Brown, dry, matted or brittle fur
- Evidence of wounds
- Lumps and lesions

### Check for Other Signs

- Low in tree or sitting on ground
- Flies buzzing around
- If you can get close enough to touch a koala there is something wrong with it

### Joeys

- Smaller than a rockmelon should never be without its mother nearby

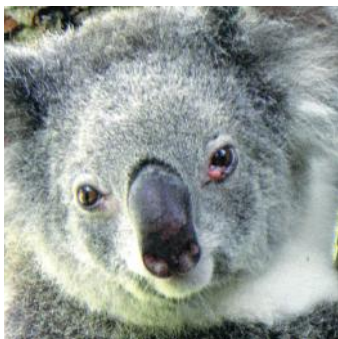


*This Project has been assisted by the New South Wales Government through its Environmental Trust*



# EYE PROBLEMS

*Eyes – red, swollen, crusty, pussy or opaque means a koala in need of care*



# RUMP AND FUR

*Dirty stained rump (yellow to black colour)  
Wet rump. Brown, dry, matted or brittle fur*



If a koala does not have **CLEAR, BRIGHT EYES,**  
**A WHITE RUMP** and **GREY FUR**

**CALL THE 24/7 RESCUE HOTLINE**

**6622 1233**

**FRIENDS OF THE KOALA**

*Care Centre & Tour Information*

Phone 02 6621 4664

23 Rifle Range Rd, East Lismore

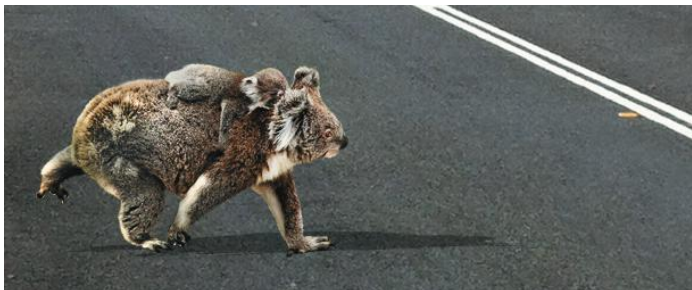
[www.friendsofthekoala.org](http://www.friendsofthekoala.org)



# KOALA WATCH

## KOALAS ON ROADS

- Koalas often use roads to get to their food trees
- Koalas can be on roads at any time of day or night



## KOALA AWARE DRIVING

If you live in or are travelling through a koala habitat area:

- Be aware of koala warning signs
- Reduce your speed
- Watch for koalas walking on the side or crossing the road

***You may drive on a road regularly where koalas live and never see one. That doesn't mean they aren't there, so be koala aware!***

## LOW VISIBILITY

Koalas most often get hit when there is low visibility and they can't be easily seen, take extra care:

- Between dusk to dawn
- On crests and curves
- When it is raining or foggy
- Where there is long grass beside roads
- When travel times coincide with dawn and/or dusk, often around the times daylight savings starts and finishes



*This Project has been assisted by the New South Wales Government through its Environmental Trust*



# KOALA WATCH



## IF YOU SEE A KOALA ON A ROAD

- that you know has been hit by a car
- that will let you approach it without running away or trying to bite or scratch
- sitting on or by the side of the road – unresponsive

**CALL THE 24HR RESCUE HOTLINE URGENTLY**

**6622 1233**

## IF YOU HIT A KOALA

- move it to the side of the road
- stop and check whether it is alive or dead
- if it is alive, try to contain it – its first instinct will be to climb up a tree regardless of injury, making its rescue difficult
- if it is dead, try to establish if male or female
- females will have a pouch in their lower abdomen which should be checked for a joey

**CALL THE 24HR RESCUE HOTLINE URGENTLY**

**6622 1233**

***Please stay with the koala until a rescuer arrives***

## KOALA WATCHING ROAD CAR KIT

Please put a Koala Road Car Kit together and store in your car. A Koala Road Car Kit could contain a pair of gardening gloves, a blanket or large towel, and if possible, a laundry basket (to put over the koala until a rescuer arrives).

**THANK YOU FOR BEING  
A KOALA AWARE DRIVER.**

### FRIENDS OF THE KOALA

*Care Centre & Tour Information*

Phone 02 6621 4664

23 Rifle Range Rd, East Lismore

[www.friendsofthekoala.org](http://www.friendsofthekoala.org)

